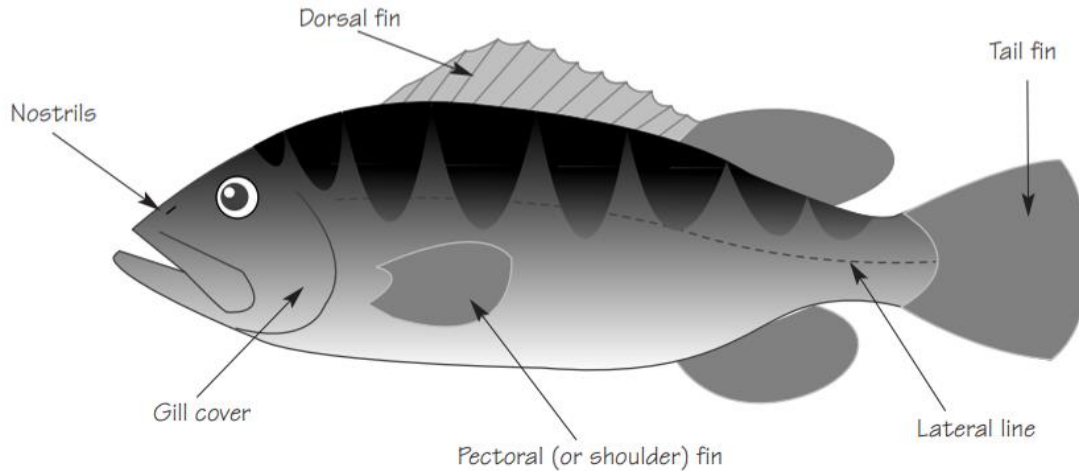


# ADAPTATION

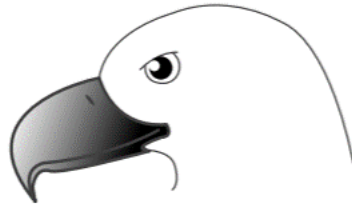
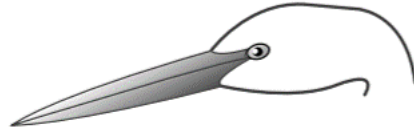


Using the terminology above, fill in the chart to see the adaptation relationship between fish features and the advantage these features give the fish!

FISH FEATURE	ADVANTAGE
	Easy movement through the water
Lateral Line	
	Protects the soft gills underneath
Nostrils	
	Helps the fish turn left and right, or to move up and down
Dorsal fin	

# ADAPTATION

Here are four birds, each with a different type of beak, and four types of food. Draw a line from each bird to the food it eats.



How does the shape of the beak help the bird get its food?

---

---

---

---

---

---

---

---

---

---

---

---

---

---

---

---

There are also many shapes and sizes of feet. Draw two different examples and tell how they help the animal survive.